



KUTHEER INFRAA

SHAPING DREAMS INTO REALITY



Project
Developed by
**KUTHEER
INFRAA**

KUTHEER INFRAA - Thinking like you

Venue is brought to you by Kutheer Infraa known for its high quality homes and speed of construction. The company focuses on thinking like its customers to create unique ideas for living.

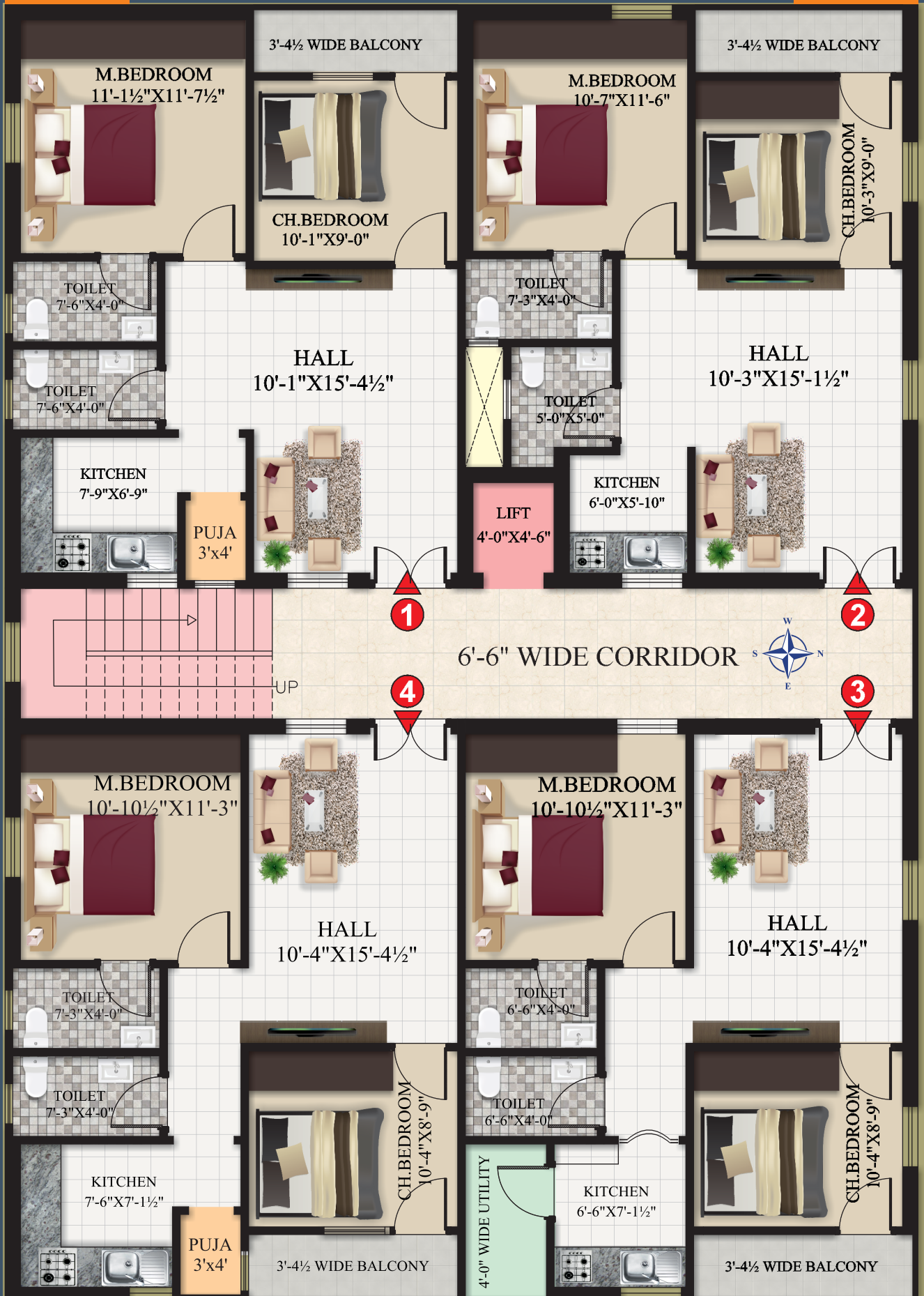
PROJECT HIGHLIGHTS & AMENITIES

- ◆ 100% Vaastu, Unique elevation with full cross ventilation of ample air and light into your flat.
- ◆ Apartment facing to 30' wide road directly connecting to 200' wide road.
- ◆ More than 41% of the plot area is left open with in the apartment.
- ◆ High end security solar fencing through out the compound wall.
- ◆ CCTV surveillance for security in common areas, each floor & parking area of the apartment.
- ◆ Provision for Broadband and Cable TV in living area.
- ◆ Sound proof diesel generator (Ashok Leyland) for providing 24 hrs power backup to lift, common area, 2 tube lights, 2 fans in each flat.
- ◆ Overhead water tank with alarm to save water.
- ◆ Rainwater harvesting pits in the premises.
- ◆ Open space decorated with ornamental plants, useful as children play area and walking.
- ◆ Venture covered with large open spaces.
- ◆ Easy access to every corner of the city.
- ◆ Live in one of the Hyderabad's most prominent locations within ORR.
- ◆ Well connected to the IT heart of Hyderabad.
- ◆ Surrounded by high-raise Apartments.
- ◆ Just beside Gated community Villas and many more reputed projects.



846 Sft

819 Sft

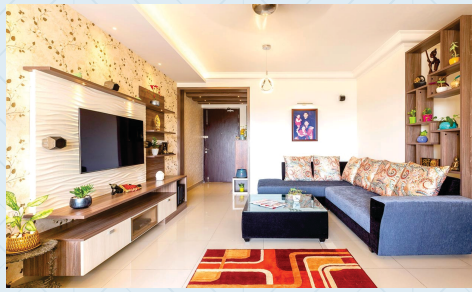


846 Sft

846 Sft

SPECIFICATIONS

Foundation & Structure	:	RCC Framed Structure to withstand wind and seismic / earthquake resistant.
Super structure	:	First class masonry with light weight solid red bricks.
Plastering	:	Plastering for all external and internal walls with two coats of cement mortar with sponge finish.
Doors	:	Main door with teak wood frame & ornamental shutter designed aesthetically, internal doors with teak wood frame and flush door shutters with standard hardware.
Windows	:	UPVC Window system with clear float glass provided with provision for mosquito mesh track.
Flooring	:	24" x 24" double charged vitrified tiles in all the rooms.
Toilets	:	Higher quality designer ceramic tiles upto door height & flooring with anti skid ceramic tiles. Accessories with CP fittings of excellent quality / water tech PVC fittings.
Balconies	:	Ceramic vitrified tiles maximum size 12" x 12" common area.
Staircase	:	Granite / vitrified tiles flooring with S.S. Railing.
Painting	:	Internal walls with 2 coats (J K / Birla) wall care putty. Smooth finish with plastic emulsion Asian paints for the entire flat. External walls with weather proof ACE paints, Asian paints for all doors 2 coats if required.
Kitchen	:	Cooking platform in Granite with stainless steel sink and glazed tiles dado above platform upto a height of 2' feet.
Plumbing	:	All toilets consists of <ol style="list-style-type: none">Concealed water connection with CPVC pipes.Toilets will be provided with Western commodes.Hot and cold water mixer with shower of reputed make.Accessories of reputed make.
Electrical	:	<ol style="list-style-type: none">1) Concealed copper wiring.2) Modular switches of reputed make (Anchor / Maru).3) TV and internet cable provision in living room.4) Power outlet for geysers and exhaust in toilets.5) Power plug for chimney, refrigerator, mixer in kitchen.6) M.C.B for each distribution board of reputed make.
Water supply	:	Continuos water supply from overhead tank / sufficient capacity of underground sump for municipal water.



SUCCESSFULLY COMPLETED PROJECTS

Apartments

BSR KUTHEER

@ Uppal Baghayath, HMDA Layout

MADHURAM

@ Isnapur

MUTHYAM

@ Isnapur

SAI BALAJI ENCLAVE

@ Chengicherla

SREEMUKHI NILAYAM

@ Muthvelguda

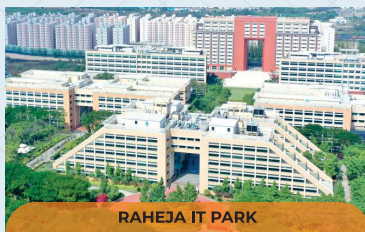


LOCATION HIGHLIGHTS

- ◆ Bhavya Shree Homes of HMDA layout well designed in 42 Acres with spacious 40 & 30 feet roads.
- ◆ Few meters away from proposed 200 feet wide Road facing.
- ◆ 3 KM from Hyderabad- Warangal Highway.
- ◆ Nearer to Chengicherla Bus Depot.
- ◆ 2.5 KM to ORR Junction (Ghatkesar).
- ◆ Near to Infosys, Genpact, Singapore Township, IT Corridor SEZ & Medha Servo.
- ◆ Surrounded by reputed Engineering Colleges / Universities like Anurag, NNRG, NMREC, SNIST, NGIT.
- ◆ International schools like GIIIS, Sage, Rotterdam, Sree Vidyanikethan, Meridian, NIHOC, DPS.
- ◆ Near to Multi specialty hospitals.
- ◆ Near to shopping Malls, Asian Uppal, MJR Square, Cinepolis, McDonalds.
- ◆ Elevated Corridor Uppal to Narapally.
- ◆ Close to Govt. Prestigious Medipally HMDA Layout.
- ◆ Close to 410 Acres Government Prestigious Uppal Bhagayath HMDA Layout.
- ◆ Close to Uppal Metro Station & Shilparamam.



GENPACT



RAHEJA IT PARK



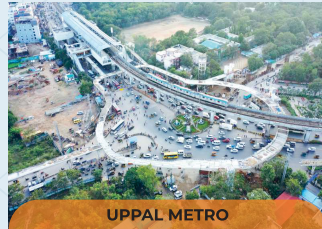
NSL Arena SEZ Uppal



NEELIMA HOSPITAL



ORR EXIT-9 GHATKESAR



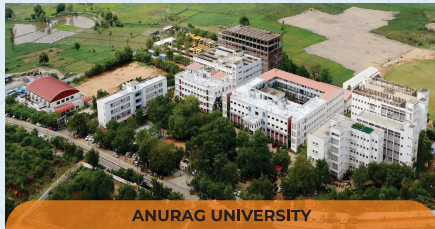
UPPAL METRO



ELEVATED CORRIDOR Ramanthapur - Narapally



UPPAL Cricket Stadium



ANURAG UNIVERSITY



MJR SQUARE



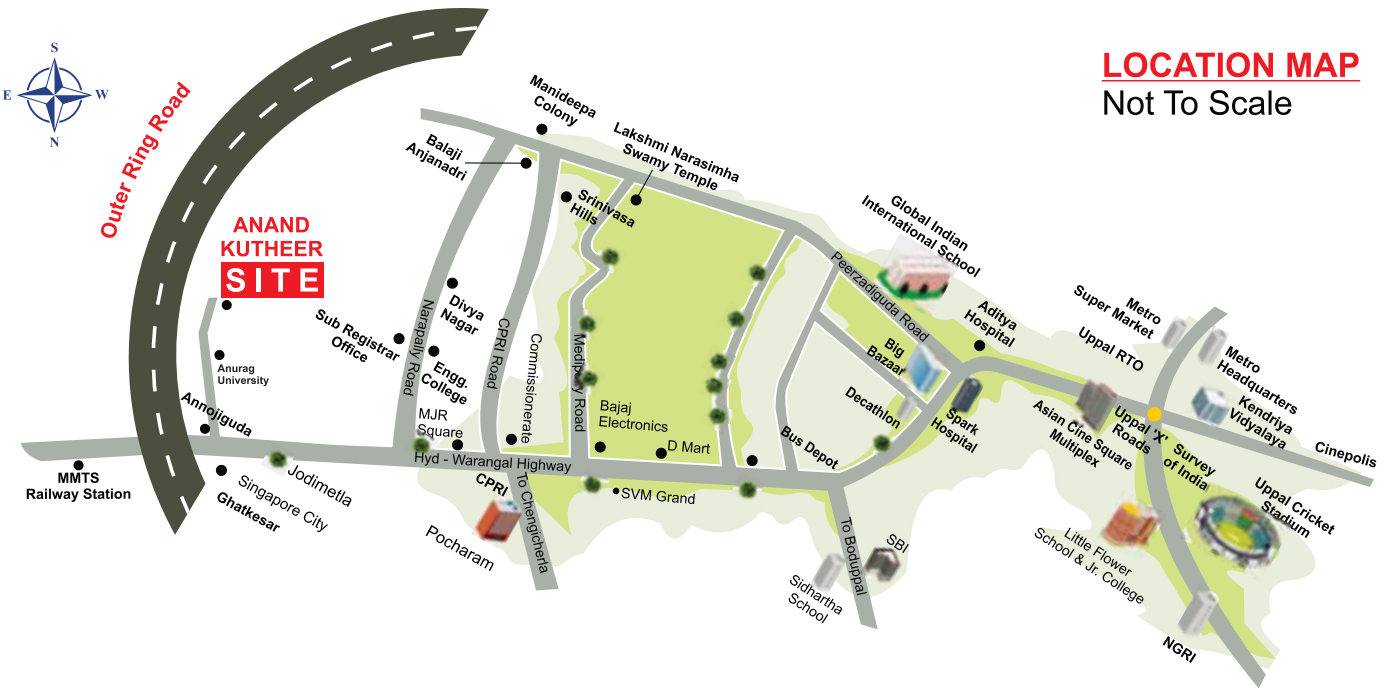
NANDANAVANAM, Narapally



AIIMS (BIBINAGAR)



SINGAPORE CITY TOWNSHIP



**KUTHEER
INFRAA**

H.No. LIG-76, Ground Floor,
Batukamma Kunta, Shivam Road,
Amberpet, Hyderabad - 500 013.
E-mail : kutheerinfraa@gmail.com
Mobile : 9440066266

Scan QR Code for details

